

EPSON

STYLUS CX5200

Page No.:1

| REF | PART NO | DESCRIPTION | SPEC | QTY |
|-----|---------|--------------------------------------|----------------|-----|
| 100 | 1230245 | BOOK COVER ASSY., 6611;EUW | | 1 |
| 101 | 1230246 | UPPER CASE ASSY.,6611 | | 1 |
| 102 | 1113228 | COVER,PANEL | | 1 |
| 104 | 1230251 | PANEL BUTTON,R(RUBBER)6611 | | 1 |
| 105 | 1230250 | PANEL BUTTON,M(RUBBER)6611 | | 1 |
| 106 | 1230249 | PANEL BUTTON,L(RUBBER)6611 | | 1 |
| 107 | 1113221 | COVER,MIDDLE;ECG | | 1 |
| 108 | 1113223 | COVER,FFC;ECG | | 1 |
| 109 | 1218549 | HOUSING,CENTRAL; | | 1 |
| 110 | 1113226 | LOCK,SCANNER | | 1 |
| 111 | 1113225 | COVER,INK TUBE;EDG2 | | 1 |
| 112 | 1113229 | HOUSING,LOWER;EDG2 | | 1 |
| 113 | 1213017 | COMPRESSION SPRING,6.0 | | 1 |
| 114 | 1040649 | LOCK,STACKER | | 1 |
| 115 | 1217084 | FOOT | | 13 |
| 116 | 1212491 | COVER,LOWER;EDG2 | | 1 |
| 117 | 1230261 | STACKER ASSY,ASP | | 1 |
| 118 | 1153811 | LOGO PLATE,10X40;G | | 1 |
| 120 | 1005019 | C.B.P-TITE SCREW,3X8,F/ZN | M3X8 F/ZN | 2 |
| 121 | 1012350 | C.B.P-TITE,3X10,F/ZN | | 7 |
| 122 | 1048799 | C.B.P-TITE SCREW,3X16,F/ZN | | 2 |
| 123 | 1001533 | C.B.S. SCREW | M3X8 | 1 |
| 124 | 1243685 | LEVER OPEN;B | | 1 |
| 125 | 1113224 | OPTICAL TUBE | | 1 |
| 126 | 1073165 | C.B.S. SCREW(B300204211) | M3X6 | 8 |
| 127 | 1230252 | HINGE DOCUMENT,L,6611 | 42.S1504.001 | 1 |
| 128 | 1230253 | HINGE DOCUMENT,R,6611 | 42.S1505.001 | 1 |
| 129 | 1073172 | C.B.S. SCREW(B300204411) | M3X10 | 1 |
| 130 | 1073171 | C.B.S. SCREW(B300204311) | M3X8 | 1 |
| 131 | 1113235 | COVER,ENTRANCE;EFS | | 1 |
| 132 | 1113233 | PAPER SUPPORT;ECG | | 1 |
| 133 | 1218417 | SHEET,LCD | | 1 |
| 180 | 1213022 | LABEL,INK MARK | | 1 |
| 181 | 1230931 | LABEL,HEAD CLEANING | | 1 |
| 200 | 2081749 | BOARD ASSY.,MAIN | 5890A,STANDARD | 1 |
| 300 | 1230266 | P/S BOARD ASSY.220,ASP | | 1 |
| 400 | 2006741 | POWER CABLE,BS31303SA-SR-10A | 240V | 1 |
| 450 | 2080377 | PANEL BOARD 6611 | | 1 |
| 500 | 2080447 | PRINTER MECHANISM(ASP) | | 1 |
| 501 | 1213602 | ROLLER,PF ASSY.,ASP | | 1 |
| 502 | 1213615 | MOTOR ASSY.,PF ASP | | 1 |
| 503 | 1108712 | EXTENSION SPRING,4.07 | | 4 |
| 504 | 2071787 | BOARD ASSY.,ENCODER,PF | , | 1 |
| 505 | 1108620 | MOUNTING PLATE,BOARD ASSY.,ENCODER | | 1 |
| 505 | 1214696 | MOUNTING PLATE,BOARD ASSY.,ENCODER;B | | 1 |
| 506 | 1006058 | CUP SCREW(B040302311) | M3X4 | 2 |
| 506 | 1006058 | CUP SCREW(B040302311) | M3X4 | 1 |
| 507 | 1042582 | GROUNDING WIRE,EJ | | 1 |
| 508 | 1215249 | EJ ASSY.,ASP | | 1 |
| 509 | 1213603 | ROLLER,EJ ASSY.,ASP | | 1 |
| 510 | 1108633 | HOLDER,ROLLER ASSY.,EJ | | 3 |
| 511 | 1249460 | INK SYSTEM ASSY.,ASP;B | | 1 |
| 512 | 1175070 | CLAMP,TUBE | | 1 |
| 513 | 2071401 | CABLE,HEAD | | 1 |

EPSON

STYLUS CX5200

Page No.:2

| REF | PART NO | DESCRIPTION | SPEC | QTY |
|-----|---------|----------------------------------|---------------|-----|
| 514 | 1080394 | POROUS PAD,CABLE,HEAD | | 1 |
| 515 | 1108672 | SHAFT,CR,GUIDE | | 1 |
| 516 | 1213614 | MOTOR ASSY.,CR ASP | | 1 |
| 517 | 1032300 | C.B.S-TITE(P4),3X6,F/ZN | | 2 |
| 518 | 1108681 | BUSHING,PARALLER ADJUST,LEFT | | 1 |
| 520 | 1154212 | EXTENSION SPRING,2.94 | | 1 |
| 521 | 1048921 | SCALE,CR | | 1 |
| 522 | 1213604 | CARRIAGE ASSY.,ASP | | 1 |
| 523 | 1112562 | HOLDER,HEAD,CABLE | | 1 |
| 524 | 1108718 | TORSION SPRING,67.87 | | 1 |
| 525 | 1154730 | LEVER,PG | | 1 |
| 526 | 1108682 | BUSHING,PARALLER ADJUST,RIGHT | | 1 |
| 527 | 1108612 | HOLDER,DETECTOR,PE | | 1 |
| 528 | 1108623 | LEVER,DETECTOR,PE | | 1 |
| 529 | 1108714 | TORSION SPRING,0.28 | | 1 |
| 530 | 2032843 | DETECTOR,HP;F | 4V,50MA,100MW | 1 |
| 531 | 1073165 | C.B.S. SCREW(B300204211) | M3X6 | 1 |
| 532 | 1073171 | C.B.S. SCREW(B300204311) | M3X8 | 1 |
| 533 | 1232850 | SUPPORT PLATE,HOLDER, STAR WHEEL | | 1 |
| 700 | F146010 | PRINT HEAD | 360 | 1 |
| 701 | 1230257 | ASF UNIT,ASP | | 1 |
| 702 | 1024130 | C.B.P-TITE SCREW,3X6,F/ZN | | 2 |
| 703 | 1082065 | COMPRESSION SPRING,5.61 | | 1 |
| 704 | 1084662 | FOOT,B | | 1 |
| 705 | 1230259 | HOPPER ASSY,ASP | | 1 |
| 706 | 1108716 | EXTENSION SPRING,1.19 | | 1 |
| 707 | 1213610 | ROLLER,LD ASSY.,ASP | | 1 |
| 708 | 1218042 | EXTENSION SPRING,2.25 | | 1 |
| 709 | 1213636 | RETARD ASSY.,ASP | | 1 |
| 710 | 1052673 | EXTENSION SPRING,0.143 | | 1 |
| 711 | 1076263 | P.W.,3.1X0.5X12,F/ZN(B100165911) | | 1 |
| 712 | 1005019 | C.B.P-TITE SCREW,3X8,F/ZN | M3X8 F/ZN | 1 |
| 713 | 1108715 | EXTENSION SPRING,0.99 | | 1 |
| 714 | 1114069 | POROUS PAD,INK EJECT;D | | 1 |
| 715 | 1108695 | POROUS PAD,INK EJECT;C | | 1 |
| 716 | 1114071 | POROUS PAD,INK EJECT;F | | 1 |
| 717 | 1114072 | POROUS PAD,INK EJECT;G | | 1 |
| 718 | 1114070 | POROUS PAD,INK EJECT;E | | 1 |
| 719 | 1108694 | POROUS PAD,INK EJECT;B | | 1 |
| 720 | 1114068 | TUBE,INK EJECT | | 1 |
| 721 | 1214680 | POROUS PAD,INK EJECT;H | | 1 |
| 722 | 1108693 | POROUS PAD,INK EJECT | | 1 |
| 723 | 1215444 | STOPPER,PAPER,STACKER | | 1 |
| 724 | 1214679 | CLEANER,HEAD;B,ASP | | 1 |
| 725 | 1214678 | CLEANER,HEAD,ASP | | 1 |
| 800 | 1261463 | SCANNER UNIT 6611;EUW;B,ASP | | 1 |
| 801 | 1261465 | CCD MODULE 6611;B,ASP | | 1 |
| 803 | 1230247 | LOWER CASE ASSY.,6611 | | 1 |
| 804 | 1196514 | HINGE ASSY. | | 2 |
| 805 | 1230254 | CABLE COVER, | | 1 |
| 806 | 1230248 | MOTOR SET ASSY.,6611 | | 1 |
| N/A | 1092331 | BUNDLE PACK,018, | ... | 1 |
| N/A | 1218433 | INK CART. UNBOXED,CYAN,, | | 1 |
| N/A | 1218434 | INK CART. UNBOXED,MAGENTA, | | 1 |

EPSON

STYLUS CX5200

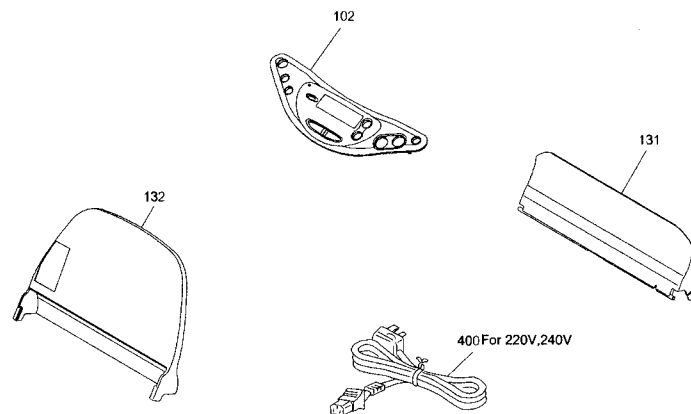
Page No.:3

| REF | PART NO | DESCRIPTION | SPEC | QTY |
|-----|---------|------------------------------------|---------|-----|
| N/A | 1218435 | INK CART. UNBOXED,YELLOW | | 1 |
| N/A | 1219447 | INK CART. UNBOXED,BLACK, | | 1 |
| N/A | 2069716 | HARNESS,USB 2.0 | | 1 |
| N/A | 1214683 | INK SUPPLY TOOL | | 1 |
| N/A | 1214684 | S46 EXCHANGE TOOL | | 1 |
| N/A | 1218235 | GREASE G-63 | 40 GRAM | 1 |
| N/A | 6010114 | SHIPPING CLEANING LIQUID,CR02,18KG | 18KG | 1 |
| END | | | | |
| | | | | |
| | | | | |

EPSON

STYLUS CX5200

Page No.:4

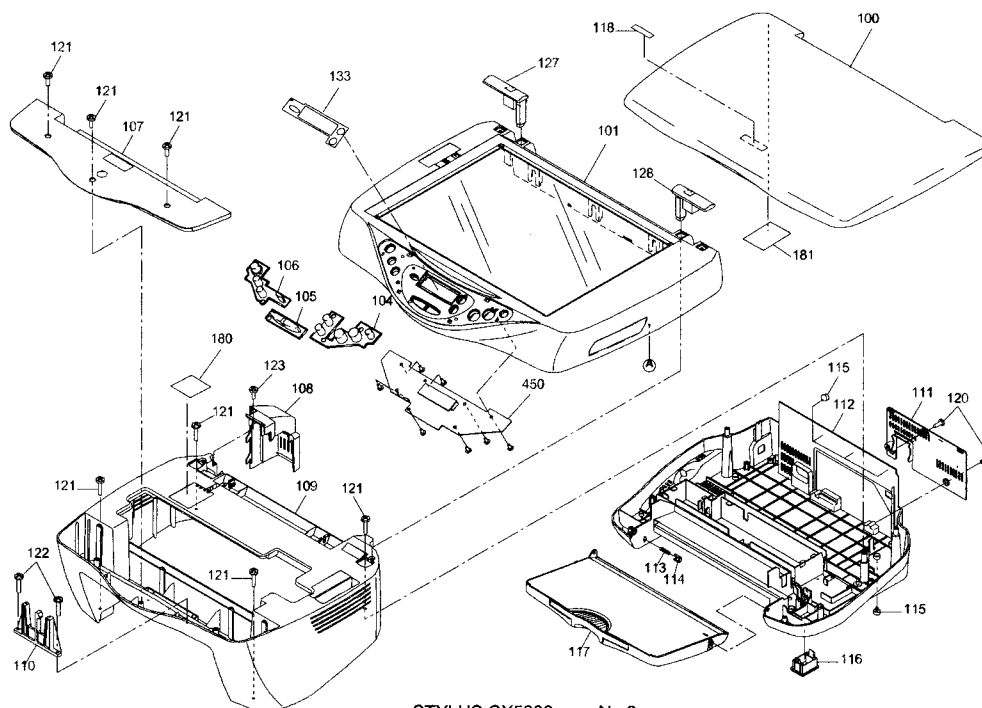


EPSON STYLUS CX5200

No.1

Rev.01

C496-ACCE-001E



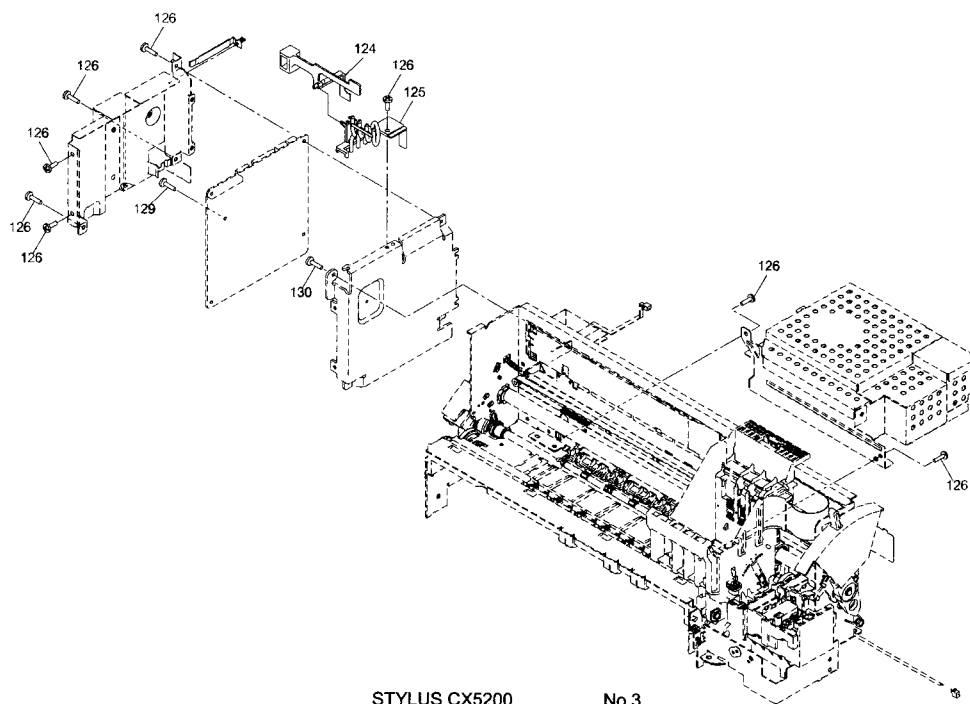
STYLUS CX5200

No.2

EPSON

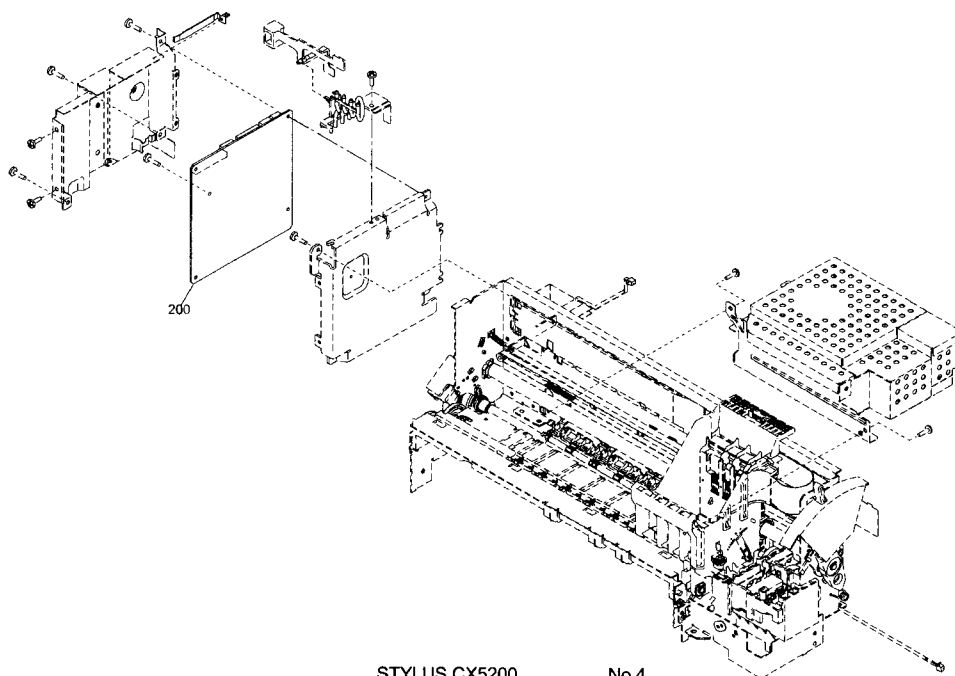
STYLUS CX5200

Page No.:5



STYLUS CX5200,

No.3



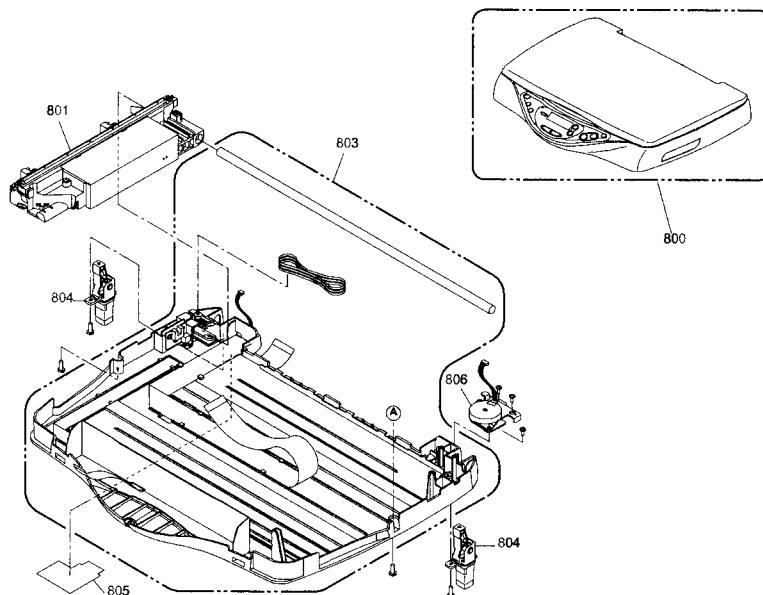
STYLUS CX5200,

No.4

EPSON

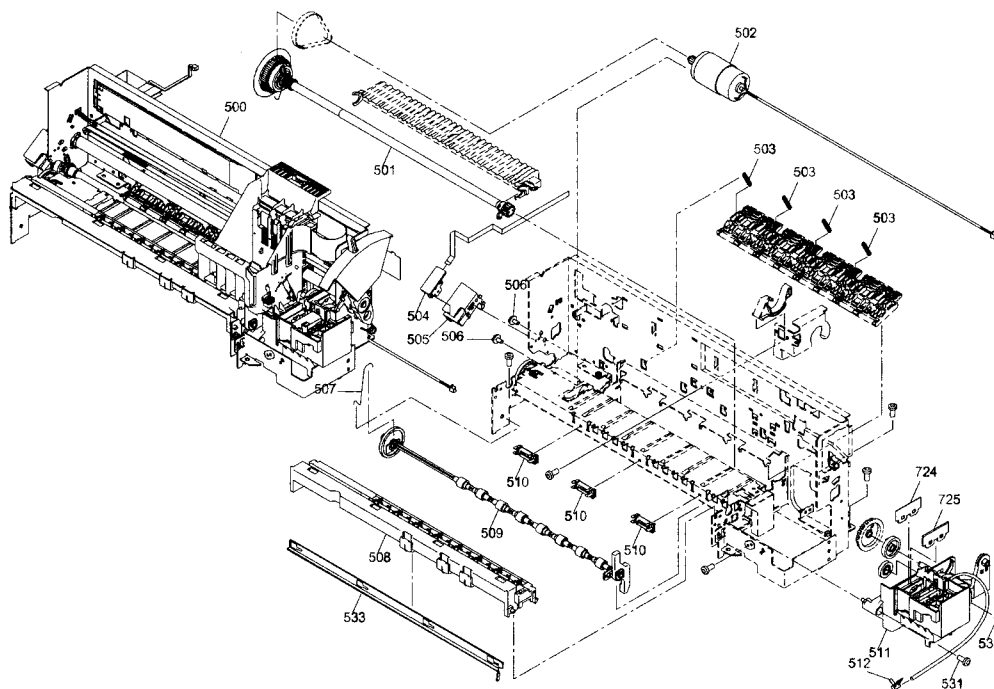
STYLUS CX5200

Page No.:6



STYLUS CX5200

No.5



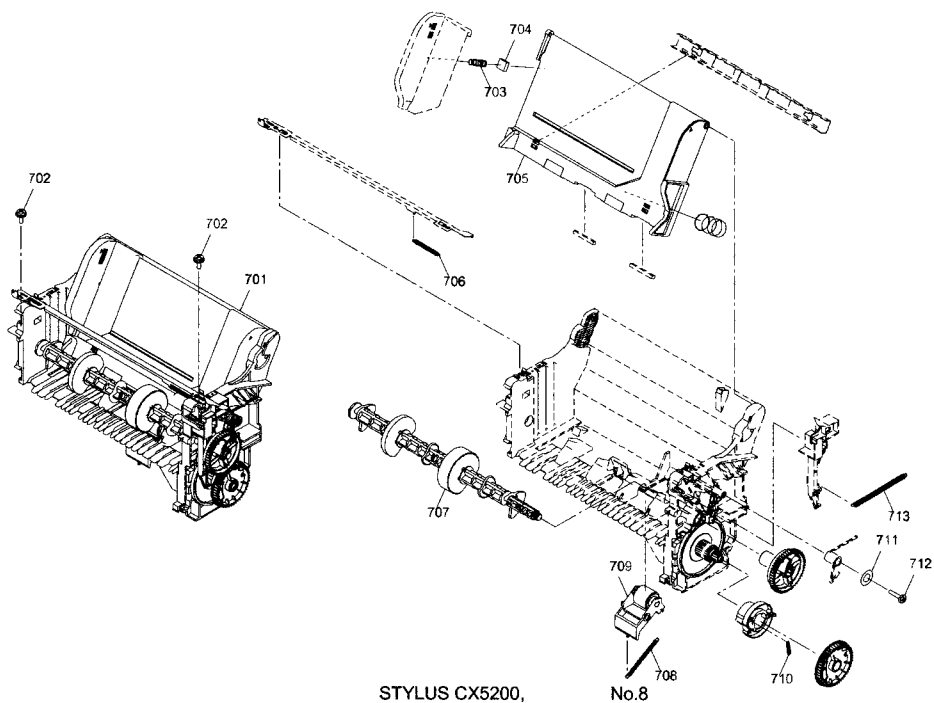
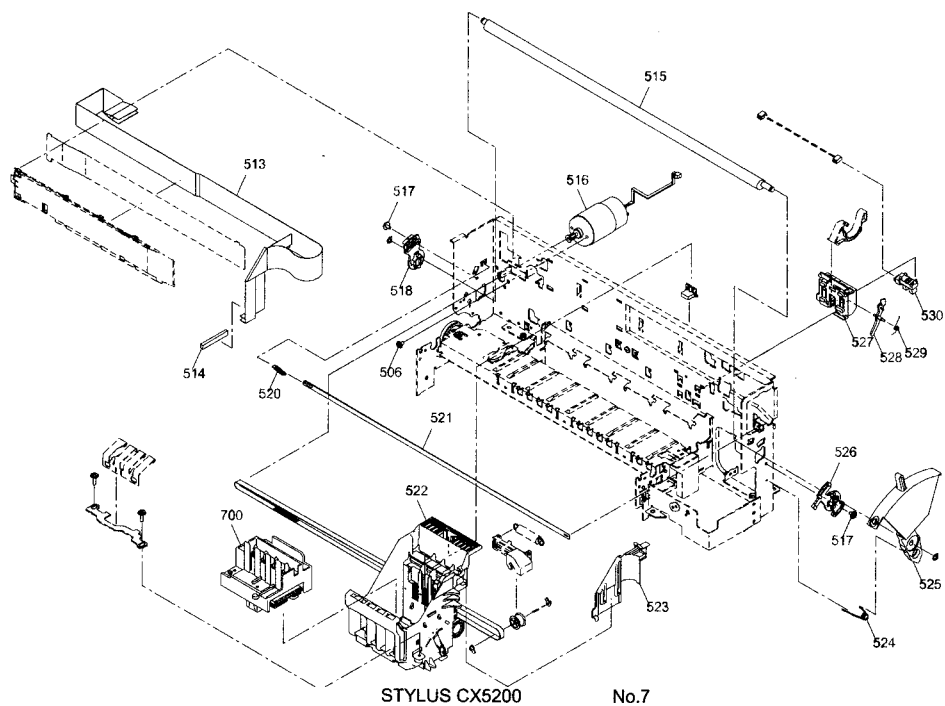
STYLUS CX5200,

No.6

EPSON

STYLUS CX5200

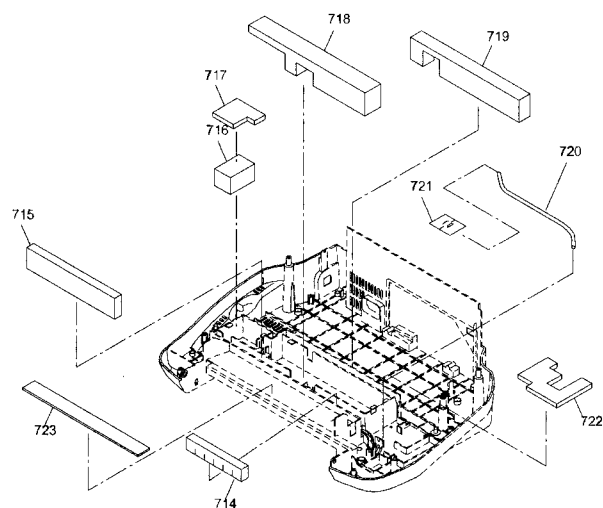
Page No.:7



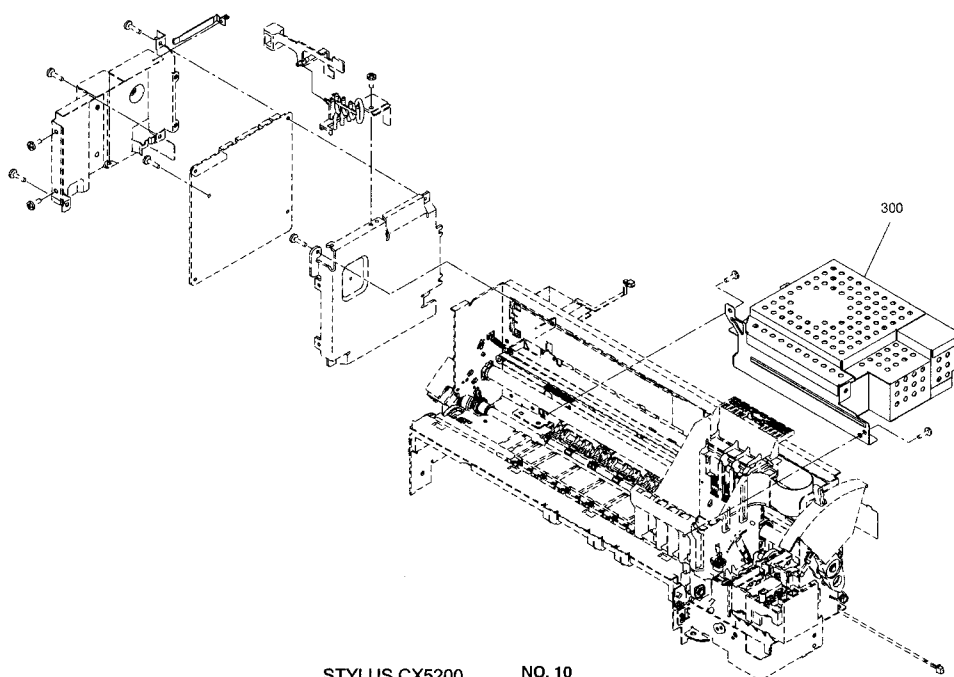
EPSON

STYLUS CX5200

Page No.:8



STYLUS CX5200, No.9



STYLUS CX5200, NO. 10